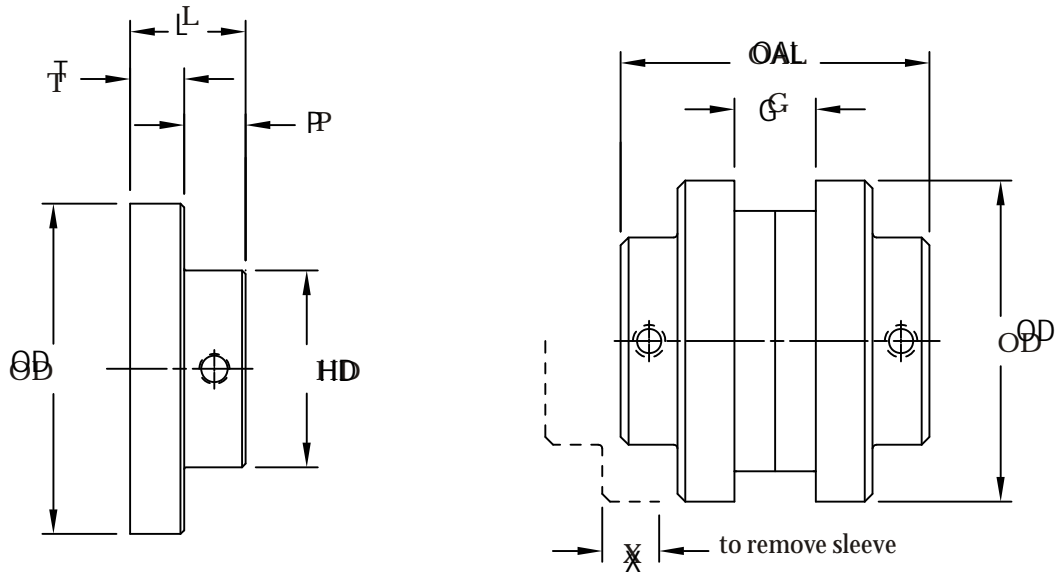




FIRM-FLEX COUPLINGS

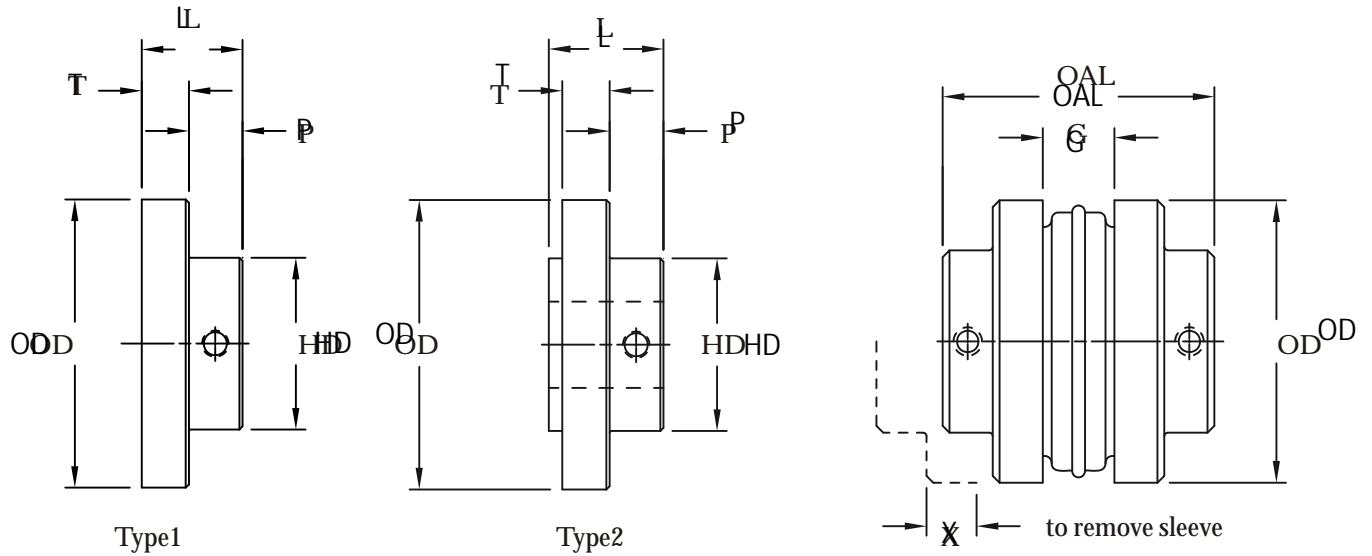


www.rblcanada.com


J Type Coupling

Flange Size	Dimensions (inches)								Weight (lbs)	
	L	OD	P	G	HD	OAL	T	X	Flange	Coupling
3J	0.8125	2.062	0.44	0.375	1.500	2.000	0.375	0.563	0.30	0.68
4J	0.8750	2.460	0.44	0.625	1.625	2.375	0.438	0.750	0.40	0.89
5J	1.0625	3.250	0.47	0.750	1.875	2.875	0.594	0.969	1.10	2.40
6JT1	1.2188	4.000	0.59	0.875	1.938	3.313	0.594	1.094	1.90	4.36
6JT2	1.2188	4.000	0.59	0.875	2.500	3.313	0.625	1.094	1.90	4.36

J-Flange material: Sintered Steel



S Type Flange

S Type Coupling

Flange Size	TYPE	Dimensions (inches)								Weight Flange
		L	OD	P	G	HD	OAL	T	X	
5S	2	1.34	3.250	0.45	0.75	1.875	2.84	0.59	0.97	1.1
6S-1	2	1.63	4.000	0.56	0.875	2.500	3.56	0.78	1.09	1.9
6S-2	1	1.31	4.000	0.53	0.875	2.500	3.50	0.78	1.09	1.9
6S-3	1	1.56	4.000	0.78	0.875	2.813	4.00	0.78	1.09	1.9
7S	2	1.84	4.625	0.69	1	2.813	3.94	0.78	1.31	2.6
8S-1	2	2.09	5.450	0.75	1.125	3.250	4.44	0.91	1.50	4.4
8S-2	1	1.94	5.450	1.03	1.125	3.250	5.00	0.91	1.50	3.7
9S-1	2	2.41	6.350	0.78	1.437	3.625	5.06	1.03	1.75	6.5
9S-2	1	2.28	6.350	1.25	1.437	4.125	6.00	1.03	1.75	6.2
10S-1	2	2.66	7.500	0.81	1.625	4.375	5.69	1.22	2.00	10.5
10S-2	1	2.69	7.500	1.47	1.625	4.750	7.00	1.22	2.00	10.5
11S-1	2	3.44	8.625	1.13	1.88	3.750	7.13	1.50	2.38	16.6
11S-2	2	3.44	8.625	1.13	1.88	4.875	7.13	1.50	2.38	16.6
11S-3	2	3.44	8.625	1.13	1.88	5.250	7.13	1.50	2.38	16.6
11S-4	2	3.06	8.625	1.56	1.88	5.625	8.00	1.50	2.38	16.6
12S-1	2	4.00	10.000	1.28	2.31	3.750	8.25	1.69	2.69	27.5
12S-2	2	4.00	10.000	1.28	2.31	4.875	8.25	1.69	2.69	27.5
12S-3	2	4.00	10.000	1.28	2.31	5.750	8.25	1.69	2.69	27.5
13S-1	2	4.38	11.750	1.31	2.69	4.875	9.25	1.97	3.06	45
13S-2	2	4.38	11.750	1.31	2.69	6.750	9.25	1.97	3.06	45
14S-1	2	4.50	13.875	1.06	3.25	4.875	9.88	2.25	3.50	69
14S-2	2	4.50	13.875	1.06	3.25	7.500	9.88	2.25	3.50	69

S-Flange material: Cast Iron (GG20-22)



FIRM-FLEX COUPLINGS

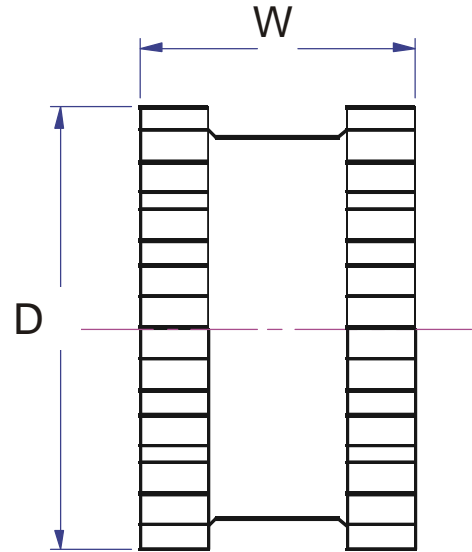
Flange Size	Stock Bore (inches)	Keyseat
3J	3/8 · 1/2	none
	5/8 · 3/4 · 7/8	3/16 x 3/32
4J	1/2	none
	5/8 · 3/4 · 7/8	3/16 x 3/32
	15/16 · 1	1/4 x 1/8
5J	1/2	none
	5/8 · 3/4 · 7/8	3/16 x 3/32
	15/16 · 1 · 1-1/8	1/4 x 1/8
6JT1	5/8 · 3/4 · 7/8	3/16 x 3/32
	15/16 · 1	1/4 x 1/8
6JT2	1-1/8 · 1-3/16 · 1-1/4	1/4 x 1/8
	1-3/8	5/16 x 5/32

Flange Size	Stock Bore (inches)	Keyseat
5S	5/8 · 3/4 · 13/16 · 7/8	3/16 x 3/32
	15/16 · 1 · 1 1/16 · 1 1/8	1/4 x 1/8
	1 3/16	1/4 x 1/8
6S-1	1 1/4	1/4 x 1/16**
	3/4 · 7/8	3/16 x 3/32
	15/16 · 1 · 1 1/16 · 1 1/8	1/4 x 1/8
	1 3/16 · 1 1/4	1/4 x 1/8
	1 5/16 · 1 3/8	5/16 x 5/32
6S-2	1 7/16	3/8 x 3/16
	1 1/2	3/8 x 1/8**
	1 5/8	3/8 x 1/8**
6S-3	1 3/4	3/8 x 1/16**
	1 7/8	1/2 x 1/8**
7S	3/4 · 7/8	3/16 x 3/32
	15/16 · 1 · 1 1/16 · 1 1/8	1/4 x 1/8
	1 3/16 · 1 1/4	1/4 x 1/8
	1 5/16 · 1 3/8	5/16 x 5/32
	1 7/16 · 1 1/2 · 1 5/8	3/8 x 3/16
8S-1	1 7/8	1/2 x 1/8**
	3/4 · 7/8	3/16 x 3/32
	15/16 · 1 · 1 1/8 · 1 3/16	1/4 x 1/8
	1 1/4	1/4 x 1/8
	1 5/16 · 1 3/8	5/16 x 5/32
	1 7/16 · 1 1/2 · 1 9/16 · 1 5/8	3/8 x 3/16
	1 11/16 · 1 3/4	3/8 x 3/16
8S-2	1 7/8 · 1 15/16	1/2 x 1/4
	2 1/8	1/2 x 3/16**
9S-1	2 3/8	5/8 x 1/8**
	7/8	3/16 x 3/32
	1 · 1 1/8 · 1 1/4	1/4 x 1/8
	1 3/8	5/16 x 5/32
	1 7/16 · 1 1/2 · 1 9/16 · 1 5/8	3/8 x 3/16
	1 11/16 · 1 3/4	3/8 x 3/16
	1 7/8 · 1 15/16 · 2 · 2 1/8	1/2 x 1/4
9S-2	2 3/16 · 2 1/4	1/2 x 1/4
	2 3/8 · 2 1/2	5/8 x 5/16
10S-1	2 7/8	3/4 x 1/8**
	1 1/8 · 1 1/4	1/4 x 1/8
	1 3/8	5/16 x 5/32
	1 7/16 · 1 1/2 · 1 9/16 · 1 5/8	3/8 x 3/16
	1 11/16 · 1 3/4	3/8 x 3/16
	1 7/8 · 1 15/16 · 2 · 2 1/8 · 2 3/16 · 2 1/4	1/2 x 1/4
10S-2	2 3/8 · 2 7/16 · 2 1/2 · 2 5/8 3/4	5/8 x 5/16
	2 7/8	3/4 x 1/4**
11S-1	3 3/8	7/8 x 3/16**
	1 1/4	1/4 x 1/8
	1 3/8	5/16 x 5/32
	1 1/2 · 1 5/8 · 1 3/4	3/8 x 3/16
11S-2	1 7/8 · 2 · 2 1/8 · 2 1/4	1/2 x 1/4
	2 3/8 · 2 3/4	5/8 x 5/16
11S-3	2 7/8	3/4 x 3/8
	3 3/8	7/8 x 7/16
11S-4	3 7/16	7/8 x 3/16**
	3 7/8	1 x 1/4**
12S-1	1 7/8 · 2 1/8	1/2 x 1/4
	2 3/8 · 2 3/4	5/8 x 5/16
12S-2	2 7/8	3/4 x 3/8
	3 3/8 · 3 7/16	7/8 x 7/16
12S-3	3 7/8	1 x 1/2

SLEEVE

Shapes Available	EPDM	Neoprene	Hytrel
1pc, unsplit	JE	JN	H
1pc, split	JES	JNS	-
2pcs	-	-	HS
Typical Use	General Purpose	Oil Resist Non-flame	General Purpose
Rel. Rating	1X	1X	4X
Wind-Up Angular	15°	15°	7°
Misalignment	1°	1°	1/4°
Temperature (F)			
maximum	+272°	+200°	+250°
minimum	-30°	-0°	-65°

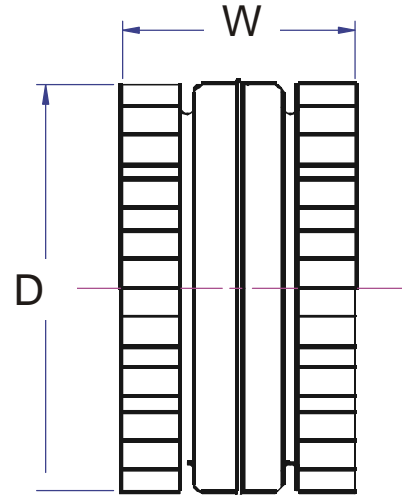
Part#	Coupling Size	D (Inches)	W (Inches)	Wt. (lbs.)
3JE	3	1 7/8	1	0.06
3JES	3	1 7/8	1	0.06
4JE	4	2 5/16	1 1/4	0.10
4JES	4	2 5/16	1 1/4	0.10
5JE	5	2 15/16	1 9/16	0.20
5JES	5	2 15/16	1 9/16	0.20
6JE	6	3 3/4	1 7/8	0.40
6JES	6	3 3/4	1 7/8	0.40
7JE	7	4 11/32	2 3/16	0.62
7JES	7	4 11/32	2 3/16	0.62
8JE	8	5 1/16	2 1/2	1.13
8JES	8	5 1/16	2 1/2	1.13
9JE	9	6	3	1.46
9JES	9	6	3	1.46
10JE	10	7 1/16	3 7/16	2.32
10JES	10	7 1/16	3 7/16	2.32



Coupling Ratings & Misalignment

Flange Size	EPDM Sleeves	Max. RPM	HP Per 100 RPM					Torque (in. lbs.)	Stiffness (in. lbs./rad)	E (inches)	Allow. Misalignment (inches)	
			Service Factor								Parallel	Angular
			1.0	1.5	2.0	2.5	3.0					
3	JE, JES	9200	0.1	0.07	0.05	0.04	0.03	60	229	1.188	0.010	0.035
4	JE, JES	7600	0.2	0.13	0.1	0.08	0.07	120	458	1.500	0.010	0.043
5	JE, JES	7600	0.4	0.27	0.2	0.16	0.13	240	916	1.938	0.015	0.056
6	JE, JES	6000	0.7	0.47	0.35	0.28	0.23	450	1718	2.375	0.015	0.070
7	JE, JES	5250	1.2	0.8	0.6	0.48	0.4	725	2769	2.563	0.020	0.081
8	JE, JES	4500	1.8	1.2	0.9	0.72	0.6	1135	4335	2.938	0.020	0.094
9	JE, JES	3750	2.9	1.93	1.45	1.16	0.97	1800	6875	3.500	0.025	0.109
10	JE, JES	3600	4.6	3.07	2.3	1.84	1.53	2875	10980	4.063	0.025	0.128

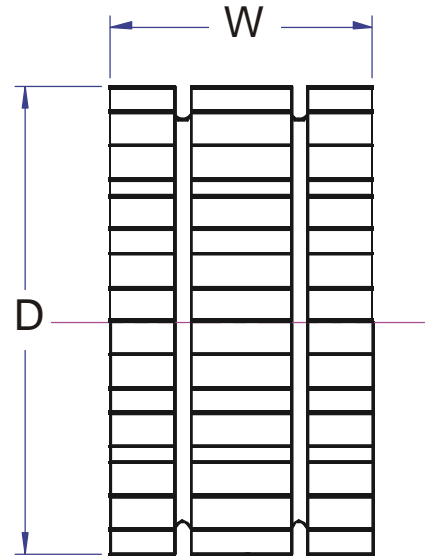
Part#	Coupling Size	D (Inches)	W (Inches)	Wt. (lbs.)
3JN	3	1 7/8	1	0.06
3JNS	3	1 7/8	1	0.06
4JN	4	2 5/16	1 1/4	0.10
4JNS	4	2 5/16	1 1/4	0.10
5JN	5	2 15/16	1 9/16	0.20
5JNS	5	2 15/16	1 9/16	0.20
6JN	6	3 3/4	1 7/8	0.40
6JNS	6	3 3/4	1 7/8	0.40
7JN	7	4 11/32	2 3/16	0.62
7JNS	7	4 11/32	2 3/16	0.62
8JN	8	5 1/16	2 1/2	1.13
8JNS	8	5 1/16	2 1/2	1.13



Coupling Ratings & Misalignment

Flange Size	Neoprene Sleeves	Max. RPM	HP Per 100 RPM					Torque (in. lbs.)	Stiffness (in. lbs./ rad)	E (inches)	Allow. Misalignment (inches)	
			Service Factor								Parallel	Angular
			1.0	1.5	2.0	2.5	3.0					
3	JN, JNS	9200	0.1	0.07	0.05	0.04	0.03	60	229	1.188	0.010	0.035
4	JN, JNS	7600	0.2	0.13	0.1	0.08	0.07	120	458	1.500	0.010	0.043
5	JN, JNS	7600	0.4	0.27	0.2	0.16	0.13	240	916	1.938	0.015	0.056
6	JN, JNS	6000	0.7	0.47	0.35	0.28	0.23	450	1718	2.375	0.015	0.070
7	JN, JNS	5250	1.2	0.8	0.6	0.48	0.4	725	2769	2.563	0.020	0.081
8	JN, JNS	4500	1.8	1.2	0.9	0.72	0.6	1135	4335	2.938	0.020	0.094

Part#	Coupling Size	D (Inches)	W (Inches)	Wt. (lbs.)
6H	6	3 3/4	1 7/8	0.44
6HS	6	3 3/4	1 7/8	0.44
7H	7	4 11/32	2 3/16	0.69
7HS	7	4 11/32	2 3/16	0.69
8H	8	5 1/16	2 1/2	1.40
8HS	8	5 1/16	2 1/2	1.40
9H	9	6	3	1.80
9HS	9	6	3	1.80
10H	10	7 1/16	3 7/16	2.90
10HS	10	7 1/16	3 7/16	2.90



Coupling Ratings & Misalignment

Flange Size	Hytrel Sleeves	Max. RPM	HP Per 100 RPM					Torque (in. lbs.)	Stiffness (in. lbs./rad)	E (inches)	Allow. Misalignment (inches)	
			Service Factor								Parallel	Angular
			1.0	1.5	2.0	2.5	3.0					
6	H, HS	6000	2.90	1.93	1.45	1.16	0.97	1800	10000	2.372	0.010	0.016
7	H, HS	5250	4.60	3.07	2.30	1.84	1.53	2875	20000	2.563	0.012	0.020
8	H, HS	4500	7.20	4.80	3.60	2.88	2.40	4530	30000	2.938	0.015	0.025
9	H, HS	3750	11.40	7.60	5.70	4.56	3.80	7200	47500	3.500	0.017	0.028
10	H, HS	3600	18.00	12.00	9.00	7.20	6.00	11350	100000	4.063	0.020	0.032